

Nile Garden Elementary School

Manteca Unified School District

5700 E. Nile Avenue • Manteca, California 95337 • 209/858-7370 • 209/858-7546

February 21, 2017

Dear Parents/Guardians of Nile Garden Students:

Your child's safety is our number one concern at Nile Garden. In the event of an evacuation I wanted to communicate the procedures that we have in place. Please note the following:

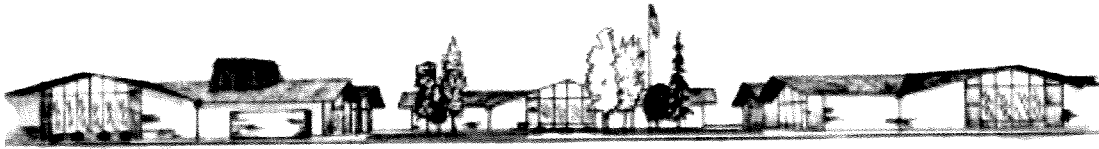
- 1) There is an evacuation plan that is set and has been reviewed with the appropriate staff.
- 2) A Blackboard Connect message will be sent out informing you of the evacuation. Please make sure that your contact information is up to date in our system. That message will contain what site the students/staff were evacuated to and instructions on student pickup.
- 3) Upon arriving at the evacuation site, we are asking that you or someone on your child's emergency card have their identification ready so that you can be identified and your child released to you in a timely fashion.

We ask that you please be patient as we, may or may not, need to go through this process. We are hopeful this evacuation will not be needed. We wanted you to be aware of our plans in the event of an emergency.

If you have any questions, please feel free to contact the school office.

Sincerely,

Deborah A. Noceti-Ward
Principal



Nile Garden Elementary School

Manteca Unified School District

5700 E. Nile Avenue • Manteca, California 95337 • 209/858-7370 • 209/858-7546

21 de febrero de 2017

Estimados Padres/Tutores de Estudiantes de Nile Garden:

La seguridad de su hijo/a es nuestra prioridad primaria en Nile Garden. En el evento de un evacuación queria comunicarles los procedimientos que tenemos puestos. Por favor nota lo siguiente:

- 1) Hay un plan de evacuación que esta establecido y ha sido revisado con el personal apropiado.
- 2) Un mensaje será enviada por Blackboard Connect informándoles de la evacuación. Por favor asegúrese que su información de contacto actualizada en nuestro sistema. Este mensaje contendrá el sito donde los estudiantes/personal fueron evacuados e instruccines sobre la recogida de los estudiantes.
- 3) Al llegar al sitio de evacuación, estamos pidiendo que usted o alguien en la tarjeta de emergencia su hijo/a tienen su identificación lista para que usted puede ser identificados y su hijo/a puede ser dados a usted lo más pronto possible.

Le peidmos que por favor sea paciente, que pasamos o no pasamos, por este proceso. Esperamos que esta evacuación no sea necesario. Queriamos que tenga en cuenta nuestros planes en caso de emrgencia.

Si tiene preguntas, por favor, pónganse en contact con la oficina de la escuela.

Sinceramente,

Deborah A. Noceti-Ward
Directora

Manteca Unified School District



2014 – 2015

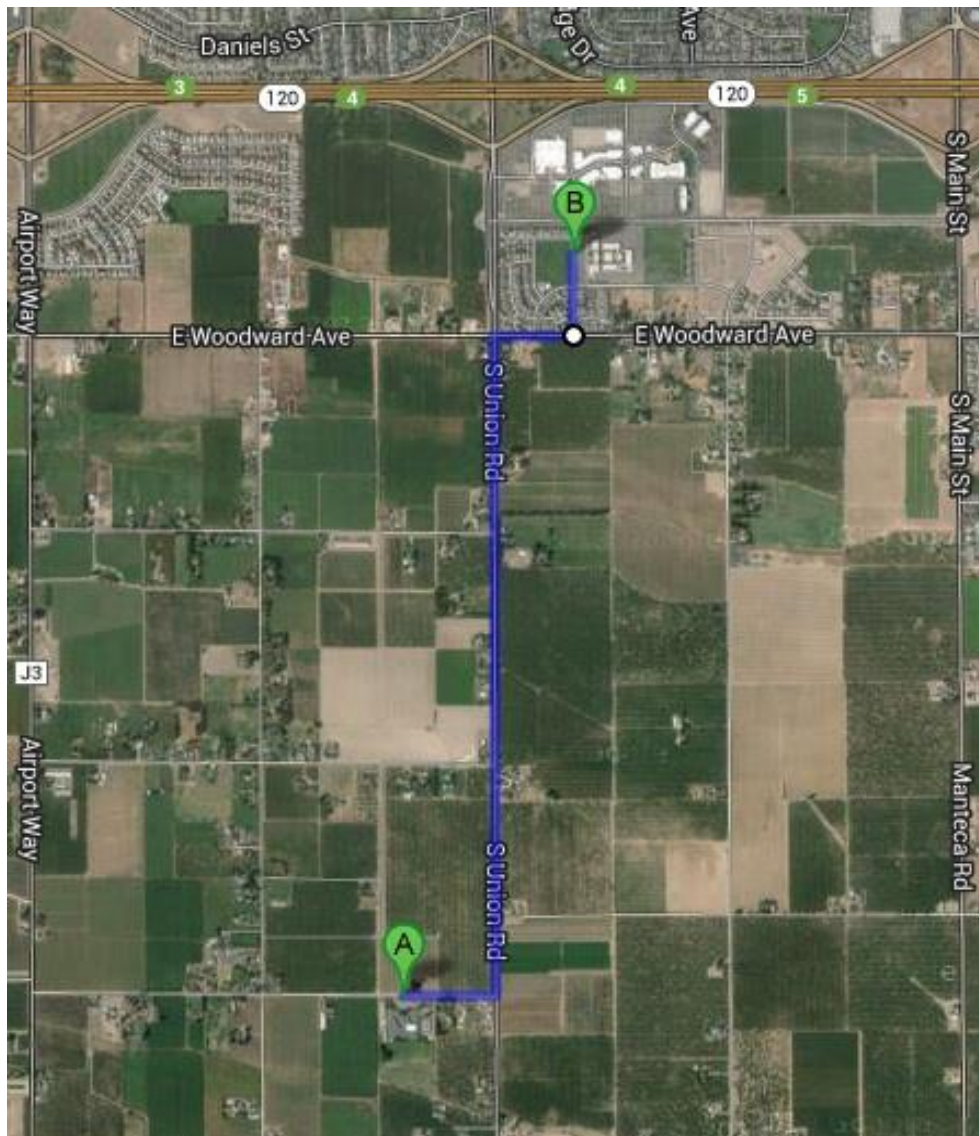
Nile Garden Elementary Redbook

Emergency Response Procedures
for Manteca Unified School District

Primary Route to Primary Off-Site Evacuation Location

Nile Garden Elementary School to Veritas School, 1600 Pagola Ave.

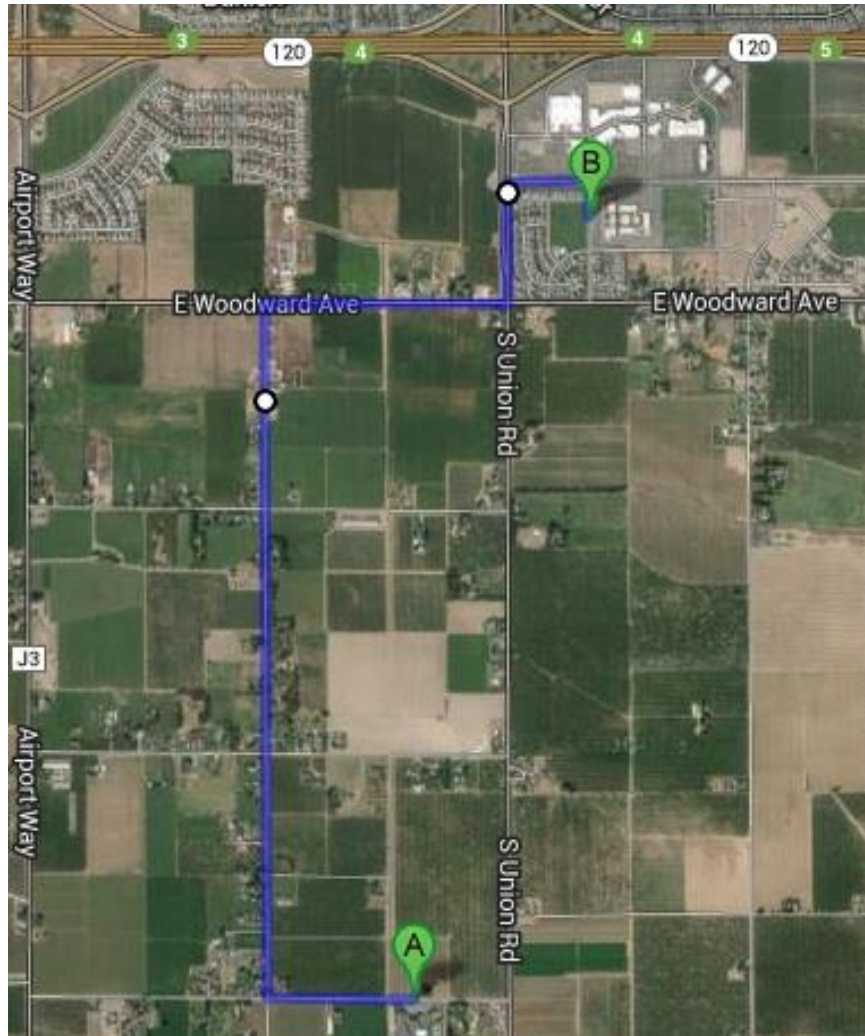
From Nile Garden School head east on Nile Rd. toward S. Union Rd. Turn left onto S. Union Rd. Turn right onto Woodward Ave. Take the 1st left onto Pagola Ave. Veritas School is on the right.



Secondary Route to Primary Off-Site Evacuation Location

Nile Garden Elementary School to Veritas School, 1600 Pagola Ave.

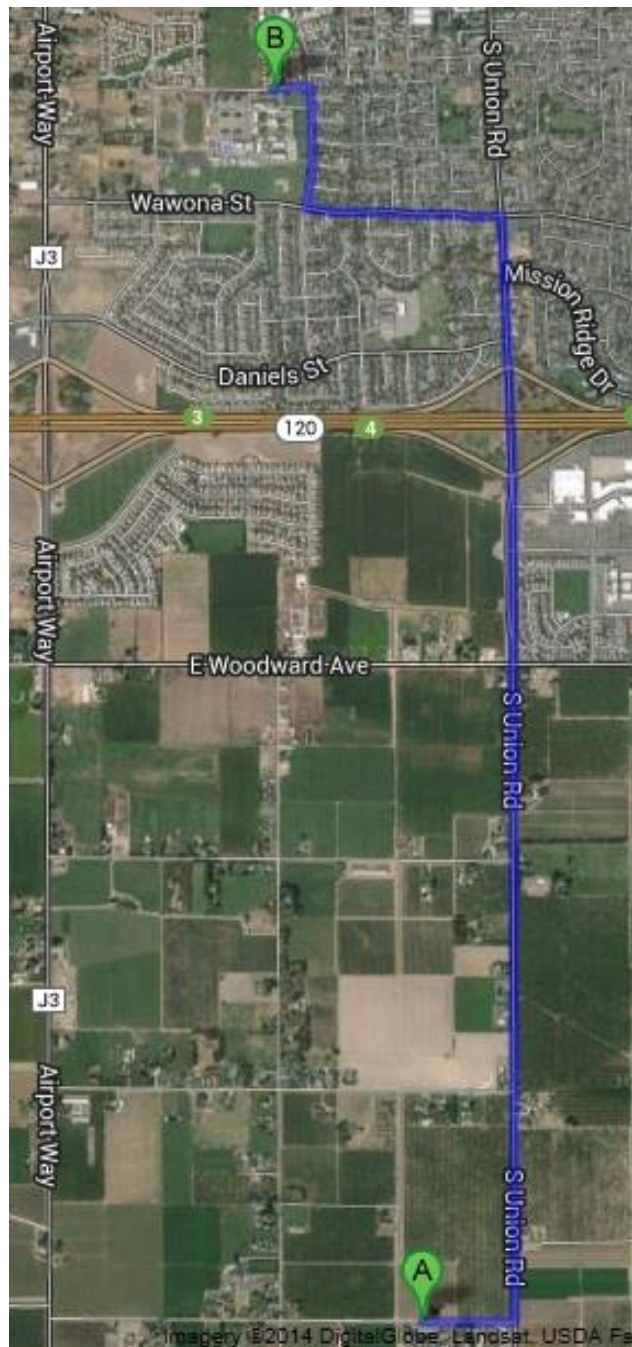
Start out going west on Nile Rd. toward Oleander Ave. Turn right onto Oleander Ave. Turn right onto Woodward Ave. Turn left onto S. Union Rd. Turn right onto W. Atherton Dr. Turn right onto Pagola Ave.



Primary Route to Secondary Off-Site Evacuation Location

Nile Garden Elementary School to Sierra High School, 1700 Thomas St.

Start out going east on Nile Rd toward S. Union Rd. Turn left onto S. Union Rd. Turn left onto Wawona St. Turn right onto Winters Dr. Take 1st left onto Thomas St. Sierra High School is on the left.



Secondary Route to Secondary Off-Site Evacuation Location

Nile Garden Elementary School to Sierra High School, 1700 Thomas St.
Start out going east on Nile Rd. toward S. Union Rd. Turn right onto S. Airport Way, turn right onto Wawona St., take 1st right onto Fishback St., turn right onto Thomas St.
Sierra High School is on the right.

